



# Your Brand **Cosmetics**

---

*Sales Presentation*

2025

# Company Overview

*We are a highly regarded, family-operated manufacturer located in the north-west of the UK. The business developed when we recognised an opportunity to provide budding entrepreneurs with top-quality sunless-tanning products made from luxurious, cruelty-free ingredients, enabling them to launch their own brand ventures with little effort.*

*We can produce, design, label, & ship our top-quality tanning products directly to you or your business 'ready to retail', or you we can ship bottled, without labels for you to label on delivery.*

*Our collection features lotions, sprays, mousses & many others! 'Your Brand Cosmetics' boasts more than twenty years of expertise in crafting & manufacturing items that ensure exceptional customer satisfaction and professionalism, paving the way for your business venture.*

*- Knowledge is a priceless gift we are ready to share*



# Services We Offer

## **Regulatory Services & Advice \***

*Support with both UK OPSS & EU CPNP regulations & registration.*

*Guidance on ingredients. Access to Material Safety Data downloads. Assistance with Product Information Files, Safety Assessments, and testing.*

## **Manufacturing**

*We will coordinate the production of all your items, including their bottles & packaging, while maintaining communication with you to guarantee your satisfaction with the final products.*

*We consistently utilize proven, premium formulations with complete batch traceability. Our products are vegan-friendly and cruelty-free. These high-quality formulations are produced in the UK, made with the finest ingredients available.*

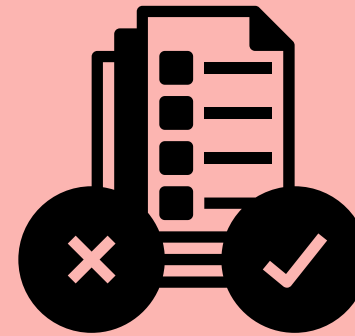
## **Labeling & Design \***

*With a team of talented designers & robust connections to proficient label manufacturers, we are dedicated to guiding you in creating your unique products, breathing life into your brand while ensuring your vision remains paramount at all times.*

## **Filling and Packaging services**

- *Label design\**
- *Label printing \**
- *Label application.*
- *Filling a variety of volumes across different bottles / container types.*

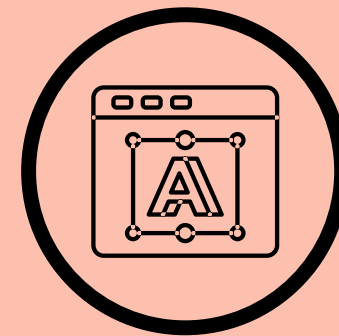
**\*optional, at additional cost**



*Regulatory Services & Advice*



*Manufacturing*



*Labeling & Design*



*Filling & Packaging*

# Simple Process

---

## 1 New Enquiry

*In this initial stage, you will consult with our sales team to determine the product(s) you wish to purchase and the quantity you desire, among other details.*

*Just drop us an email or call to begin!*

## 2 Samples

*Order your sample(s) on our website! Select all relevant customisations such as bottle colour, shade & fragrance(s) allowing you to try it out yourself & perhaps even share it with friends or family!*

## 3 Design Brief\*

*After that, you'll be connected with a member of our design team who will help turn your brand vision into reality with your product labels! You can maintain ongoing communication with them during business hours for any adjustments you may desire or require.*

## 4 Production

*After your labels and bottles are ready and you're satisfied with their appearance, we can start producing your products.*

*Simply place your order on the website and checkout! Your order is generally prepared in 1-3 days, if longer timelines are expected we will inform you of such right away.*

## 5 Shipping

*We will ship your order to your specified delivery address. The shipping duration may range from a day to several days, influenced by whether you are located in the UK or abroad, with times varying based on your international distance.*

*\*optional , at additional charge*

# Product Range

---

2025



# Tanning Mousse

---

*A hydrating, anti-oxidant rich, premium tanning mousse made with cruelty-free ingredients for a natural, deep and healthy glow.*

*This product is offered in 200ml foamer bottles, in black or white. Other bespoke bottle colours and types might be available upon request or you can send us your packaging to fill.*

*Readily available is 4 x shades, however if you're looking for an 'in-between' shade just ask! We'll happily accommodate.*

*Generally shades are retailed as;*

*Light= 8% DHA, Medium 10%, Dark 12% & Extra dark 14%*

*(Please be aware that if you are within the EU no higher than 10% should be ordered, due to DHA regulations).*

*We also offer an ultra dark bronzer mousse with DHA for a lasting tan, or in 'wash off' form - great for those wanting the ultimate dark tan or those in the performance industry (see next page)*

*You can also have scent added to your product, this includes: Baby Powder, Cherry, Chocolate, Coconut, Strawberry with Vanilla and many more. You can also create your own unique fragrance with a combination of these fragrances.*



# Dance Mousse

---

*For those looking to launch the ULTIMATE dark self tan mousse we have Dance Mousse!*

*Great for performance tans, dance athletes and regular tanners wanting to achieve a super dark tan.*

*The concentration of immense bronzer gives an immediate colour on application;*

*Available with DHA for a lasting deep dark tan which will last several days,  
or  
without DHA for an instant super dark tan without the lasting effects - the tan is gone in your first shower!*

*This product is offered in 200ml foamer bottles, in black or white. Other bespoke bottle colours and types might be available upon request or you can send us your packaging to fill.*

*You can also have scent added to your product , this includes: Baby Powder, Cherry, Chocolate, Coconut, Strawberry with Vanilla and many more. You can also create your own unique fragrance with a combination of these fragrances.*



# Tanning Water

---

*Clear tan = ZERO TRANSFER:*

*The advanced clear tanning formula means it won't transfer onto your clothes or stain your sheets. Goes on clear & no rinse required.*

*Contains skin nourishing Aloe for a hydrating glow*

*Supplied in 200ml spritz bottles for self-tan / home application.*

*Available in clear bottles, white or black*

*(other colours might be possible upon request or you can supply us with your own bottles and we'll fill those)*

*Available from 3% DHA (considered a subtle level, great to achieve a natural sunkissed glow or top up between spray tans), all the way up to 10% DHA for darker results.*

*Offered without fragrance, or with coconut fragrance*



# Spray Tan

---

*A luxurious tanning solution that offers hydration, ensuring your clients achieve a beautiful, natural radiance. It features a similar formula as our mousses, but in liquid form for professional application, and comes in all our delightful fragrances.*

*Contains bronzer so the user feels the immediate glow of colour whilst the tan develops over 8 hours, or less time if Rapid us used ('brown based', made with a mix of red and green pigment)*

*For this product we offer 3 bottle sizes ; 250ml, 1000ml or 4000ml \**

*Readily available in 5 different shades:*

*Light 8%DHA , Medium 10%, Dark 12%, Extra Dark 14% & Express / Rapid Tan.*

*If you're looking for an 'in-between' shade just ask*

*(Please be aware that if you are within the EU no higher than 10% should be ordered, due to DHA regulations).*

*\*our website offers 1000ml as standard, email us for pricing of different sizes*



# Clear Spray Tan

---

*Clear tan = ZERO TRANSFER - in professional spray tan form.  
Commonly used for bridal tans.*

*The advanced clear tanning formula means it won't transfer onto your clothes  
or stain your sheets. Goes on clear & no rinse required.  
Contains skin nourishing Aloe for a hydrating glow*

*Supplied in 250ml, 1000ml or 4000ml \**

*Available in white or black bottles  
(other colours might be possible upon request or you can supply us with your  
own bottles and we'll fill those)*

*Available from 3% DHA (considered a subtle level, great to achieve a natural  
sunkissed glow), all the way up to 10% DHA for darker results.*

*Offered without fragrance, or with coconut fragrance*

*\*our website offers 1000ml as standard, email us for pricing of different sizes*



# Violet Based Tan

---

*Violet based professional formula - similar to violet shampoo the violet base counteracts yellow tones ensuring a deeper brown result. Recommended for those wanting a rich, cooler brown finish. Best suited to olive skin or those with yellow undertones.*

*A luxurious tanning solution that offers hydration, ensuring your clients achieve a beautiful, natural radiance. It features a similar formula as our mousses, but in liquid form for professional application, and comes in all our delightful fragrances.*

*Contains bronzer so the user feels the immediate glow of colour whilst the tan develops over 8 hours, or less time if Rapid us used*

*For this product we offer 3 bottle sizes ; 250ml, 1000ml or 4000ml \**

*Readily available in 5 different shades:*

*Light 8%DHA , Medium 10%, Dark 12%, Extra Dark 14% & Express / Rapid Tan.*

*If you're looking for an 'in-between' shade just ask*

*(Please be aware that if you are within the EU no higher than 10% should be ordered, due to DHA regulations).*

*\*our website offers 1000ml as standard, email us for pricing of different sizes*



# Tanning Lotions

---

*A luxurious moisturising lotion giving you a sun-kissed tan everytime, all year round.*

*Our number one vacation essential!*

*Create a sunkissed glowing look if used alone, or use after having a spray tan to extend the life of your sunless tan and promote even fade.*

*Our premium formula contains skin nourishing vitamins including B3, B6, C, E & Aloe*

*Contains a subtle 3% DHA and a tropical mango scent*

*Supplied in 250ml lotion bottles, available in black or white.*

*Other bespoke bottle colours and types might be available upon request or you can send us your packaging to fill.*



# Booster Drops

---

*Glowing drops of sunshine!*

*Enhance the DHA level of your spray tan / self tan with Booster Drops.  
Our recommended dosage is; 10 x drops in 100ml of tan to increase the DHA by 1%*

*Or, add to your regular body / face lotion for a subtle natural glow , more drops = more intense result, you determine the depth!*

*For this product we offer 1 bottle size - a 50ml amber glass bottle with a dropper cap to help the user decant correct measure.  
Other bespoke bottle colours and types might be available upon request or you can send us your packaging to fill.*

*Comes unscented so it can be placed in any of your products without changing the scent*



# Barrier Cream

---

*Barrier Cream can be used to minimise or completely block DHA absorption.*

*Use a more generous application to completely block absorption from the palms of hands, fingernails, and toenails.*

*Apply a finer layer to areas such as knees, elbows and ankles to prevent the tan grabbing to these dryer skin areas (dry skin areas can develop darker if left untreated).*

*For this product we offer one bottle size - a 250ml white bottle with a black disc-top cap.*

*We also offer lotion pump bottles, just ask for this option before making your purchase.*

*This product is not fragranced.*

*If you are looking to purchase a larger amount, other bespoke bottle colours and types might be available upon request or you can supply us with your own bottles - get in touch for more info!*



# Tanning Primers

---

*Ensuring your clients skin is prepped and primed - made easy!*

*Our Primer Prep Spray will remove surface oils, makeup, deodorant & sweat residue, providing optimal penetration of tanning solutions and more desired flawless results.*

*Supplied in 500ml semi-transparent bottles, white screw cap and a trigger spray for when in use.*

*Our Primer Prep Spray is blue in colour, giving a high end cosmetic ascetic.*

*Directions;*

*Use immediately before spray tanning session.*

*Mist onto clients skin and buff off with soft cloth or couch roll*

*or*

*Spray directly onto soft cloth or couch roll and buff potential barriers away.*

*\*Primer Prep Spray is not meant as a replacement for usual pre-tan exfoliation which removes dead skin cells and is essential before any tanning treatment.  
This is a residue removal product.*



# UV Accelerator

---

*A water-based UV tan accelerator enriched with anti-aging, hydrating and antioxidant vitamins including Vitamins B3, B5, B6, C & E*

*Deeper results, in a shorter timeframe, whilst nourishing the skin*

*Designed for use on UV tanning beds*

*Supplied in white or black 250ml lotion pump bottles.  
Available in either Tropical or Bubble gum fragrance.*



# Contact Us

[www.yourbrandcosmetics.co.uk](http://www.yourbrandcosmetics.co.uk)

Spray Tan Direct Ltd  
Unit 6, Bannister Hall Works  
Preston, Lancashire  
PR5 4DZ

Tel: 01772 696338

Email: [sales@yourbrandcosmetics.co.uk](mailto:sales@yourbrandcosmetics.co.uk)

Company Reg: 06971967

Company VAT: GB980139512

